

CRANE[®] MERCHANDISING SYSTEMS

SERVICE INFORMATION

M128.0

MODELS AFFECTED: All CGFV DN5000/3000 Models
MODEL NUMBERS: DN5000/3000 – CGFV Venders

Date: 5/9/12

RE: Crane Merchandising Systems DN5000/3000 Evaporator Fan Assembly Retrofit Kit.



Reason: To provide installation instructions when replacing the evaporator fan assembly in existing CGFV refrigeration systems in the field. If you have any issues please contact your Crane Merchandising Systems Representative or the Technical Service Department at 803-266-5001.

Tools Required (not included in kits):

#2 Phillips screw driver, drill, #29 (0.136") drill bit, ¼" drill bit, ratchet, 11/32 socket, measuring tape, marker

Order: 62604360 DN5000/3000 Evaporator Fan & Choke Retrofit Kit see list of parts included:

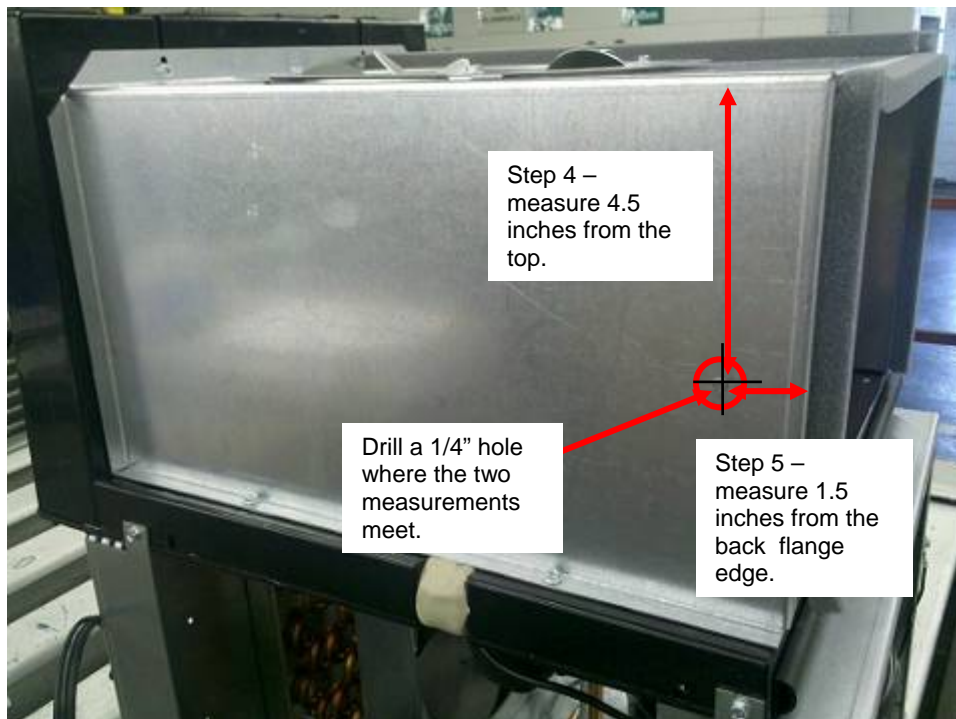
Description	Part #	QTY
Evaporator Fan Blower Assy, 115V	CR0014480	1
Choke	80492692	1
Evaporator Fan Extension Harness	CR0012869	1
Screw, 10-32 x 1 ¼ Phil Pan	80030428	1
Hex Nut, 10-32	80080156	1
Screw, 8-32 x 3/8 (not shown)	80030438	3
Perma-gum, white (not shown)	80360113	.0625 lb
Installation Instructions	M128.x	1



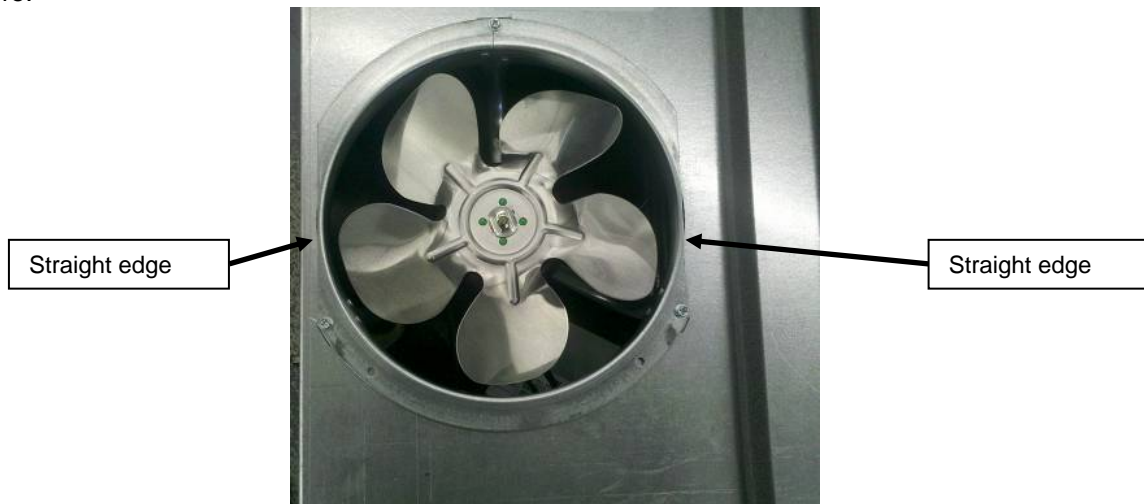
SERVICE INFORMATION

Instructions for installing Evaporator Fan & Choke Retrofit Kit.

1. Unplug vender from power supply.
2. Remove the refrigeration system from the vender using instructions M030.x if needed.
3. Ensure all parts are present for installation.
4. Measure 4.5 inches from the top of the evaporator and draw a horizontal mark.
5. Measure 1.5 inches from the back edge of the evaporator (not the gasket) and draw a vertical mark so the mark touches or intersects the horizontal mark made in step 4.
6. Drill a 1/4" hole where the marks meet or intersect from steps 4 and 5.



7. Remove the existing evaporator fan assembly from the refrigeration unit.
8. Place the new Evaporator Fan Assembly (CRCR0014480) in position in the Evaporator shroud.
9. Make the edge of the shroud and the straight edge of the Evaporator Fan Assembly parallel as shown in picture.



SERVICE INFORMATION

10. Important note: the mounting holes in the Evaporator shroud do not line up with the holes in the new Evaporator Fan Assembly basket.
11. Using the holes in the Evaporator Fan Assembly basket drill three new 0.136" holes in the Evaporator Fan shroud and secure with the 3 screws (80030438) provided in the kit.
12. Next mount the Choke (80492692). Identify the four marked prongs of the Choke. Ensure that the choke is mounted with the A and C prongs above the B and D prongs.
13. Install the screw (80030438) through the 1/4" hole drilled in the shroud in step 6.
14. Place the Choke over the screw and attach the hex nut (80080156) over the Choke.
Caution: DO NOT OVERTIGHTEN!
15. Ensure the Choke is straight and upright relative to the Evaporator Shroud as shown.



16. Attach the harnesses to the Choke as described.
 - a. Attach the Evaporator Fan Extension Harness CR0012869.
 - i. Blue wire to A prong of Choke.
 - ii. Brown wire to B prong of Choke.
 - b. Attach the Evaporator Fan Motor Harness (part of CR0014480).
 - i. Black ribbed wire to C prong of Choke.
 - ii. Black smooth wire to D prong of Choke.

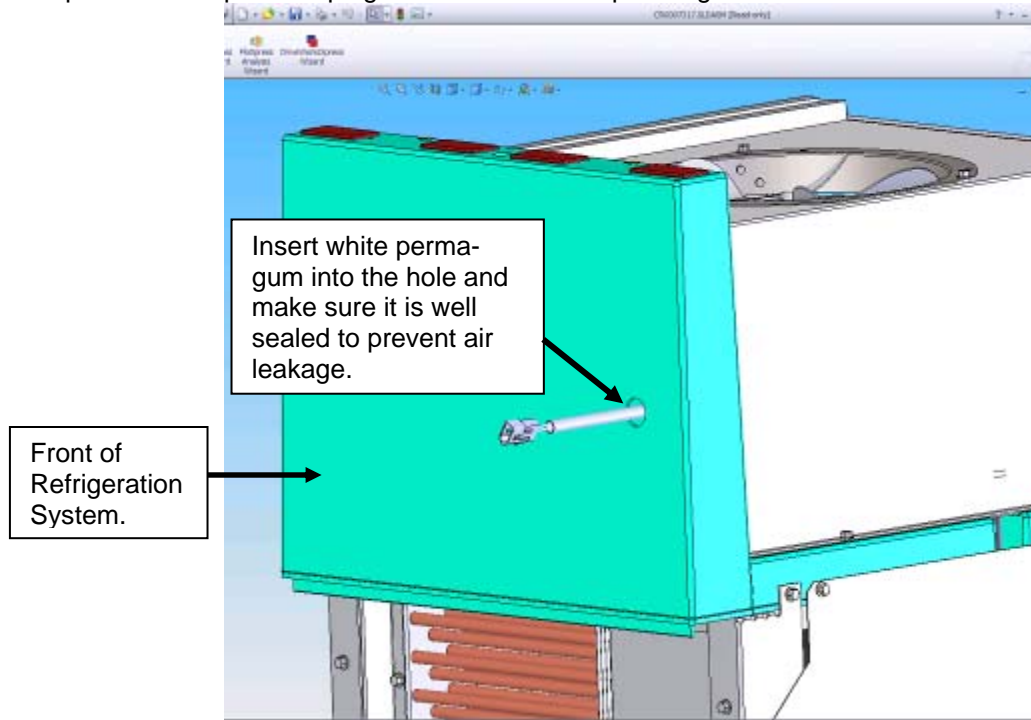
This configuration is

A – Blue	C – Ribbed
B – Brown	D – Smooth



SERVICE INFORMATION

17. Route the new Evaporator Fan Extension Harness (CR0012869) through the hole in the front of the evaporator drain pan and plug the hole with white perma-gum.



18. Install the Refrigeration System in the vender using instructions M030.x if needed.
 19. Plug in connections.
 20. Plug in vender and test for proper operation.
- Note: On initial power up, the evaporator fan will check the direction to turn for a few moments (jog clockwise, then counter clockwise) before turning on completely. This is normal behavior of the high efficiency fan motor.